

## **1.0 PURPOSE AND FORMAT OF THE FINAL EIR**

---

### **1.1 PROJECT OVERVIEW**

CEMEX (RMC Pacific Materials, dba CEMEX) operates the Bonny Doon Shale and Limestone Quarries in Santa Cruz County for the production of Portland cement at its cement plant facility in Davenport. CEMEX has submitted an application to the County of Santa Cruz to expand its current mining boundary within its vested or legal mining limit as defined by the Legal Mining Limit. The project proposal also includes revising the revegetation plan component of the Bonny Doon Quarries 1996 Reclamation Plan for both the Shale and Limestone Quarries. No mining plan changes are proposed for the Shale Quarry. These actions require an amendment to the current Use Permit (#3236-U), amendment to the Certificate of Compliance (COC) for Use Permit 3236-U, a Coastal Development Permit, and an amendment to the 1996 Reclamation Plan (89-0492).

The Shale and Limestone Quarries are located in the rural community of Bonny Doon approximately 1.5 miles east of Davenport in the coastal mountains of Santa Cruz County, California (Figure 1, Regional Location). Access to the quarry site is provided by a gravel road off Bonny Doon Road (Figure 2, Project Vicinity). Both of the parcels are designated Mountain Residential with a Quarry Overlay in the County General Plan. The zoning district for the limestone quarry parcels is M-3 Mineral Extraction.

The region surrounding the Bonny Doon Quarry is characterized by the rugged topography and incised drainages of the Santa Cruz Mountains. Drainages near the Limestone Quarry include the East Branch and Middle Branch of Liddell Creek. The Limestone Quarry is located within a known ground water recharge area. A spring on Liddell Creek (Liddell Spring #1) serves as a water source for the City of Santa Cruz. A second spring serves the quarry.

Scattered residences to the north and east of the Limestone Quarry make up the rural community of Bonny Doon. Residential parcels adjoining the quarry boundary to the north are owned by CEMEX and used for employee housing. Other land uses in the vicinity of the quarries include limited agriculture (cattle and horse grazing), timber harvest, and open space preserves.

The entire Limestone Quarry parcel is 272 acres and comprises the quarry pit, disposal areas for overburden and off-spec (unusable) rock, settlement basins, and native vegetation on unmined areas (Figure 3, Limestone Quarry Facilities). A portion of this is within the vested mining limit. CEMEX also has the right to place overburden and off-spec rock on property immediately south of the Limestone Quarry parcel.

The Limestone Quarry has 26.5 acres included within its legal mining limit, but not included in the current mining plan boundary approved by the County of Santa Cruz. The proposed project would extend mining onto approximately 17.1 acres of that unmined land. The proposed 17.1 acre Limestone Quarry Boundary Expansion is east of the existing quarry pit and would terminate at the quarry Legal Mining Limit as shown as the proposed Boundary Expansion Area on the quarry site map (Figure 5, Limestone Quarry Existing Contours). Boundary expansion into the remaining 9.4 acres is not proposed at this time and is not addressed in this Environmental Impact Report (EIR) except as it relates to cumulative impacts. The proposed Boundary Expansion Area is a hillside between elevations 1,100 and 1,250 feet above mean sea level with moderately steep slopes covered by Mixed Evergreen Forest, North Coast Redwood Forest and Northern Coastal Scrub vegetation.

The Shale Quarry parcel is 183 acres and is located on property leased by CEMEX (Figure 4, Shale Quarry Facilities). The proposed project would make no changes to the Shale Quarry mining plan perimeter or operations. Because the project would extend the Limestone Quarry life, it would in effect extend the period of mining at the Shale Quarry. The proposed 1996 Reclamation Plan Amendment also includes modifying the revegetation plan for the Shale Quarry.

## **1.2 PURPOSE OF THE FINAL EIR**

The proposed project is required to comply with the California Environmental Quality Act (CEQA) because the project is a discretionary activity that would be implemented and approved in part by California public agencies. The County is required, after completion of a draft EIR, to consult with and obtain comments from public agencies having jurisdiction by law with respect to the proposed project, and to provide the general public with an opportunity to comment on the draft EIR. The County, as the lead agency, is also required to respond to significant environmental issues raised in the review and consultation process.

This Final EIR has been prepared to respond to public agency and general public comments received on the Draft EIR for the Bonny Doon Limestone Quarry Boundary Expansion Project and Reclamation Plan Amendment, which was circulated for public review July 31 to October 1, 2007.

## **1.3 FORMAT OF THE FINAL EIR**

This document has been prepared as an addendum to the Draft EIR as allowed by Section 15088(c) of the State CEQA Guidelines. This document and the Draft EIR (July 2007), herein incorporated by reference, constitute the Final EIR and are available at the County of Santa Cruz Planning Department, Santa Cruz City and County Library – Central Branch and Felton Branch, and on the Internet at the County of Santa Cruz web site (<http://www.sccoplanning.com/html/env/eir.htm>).

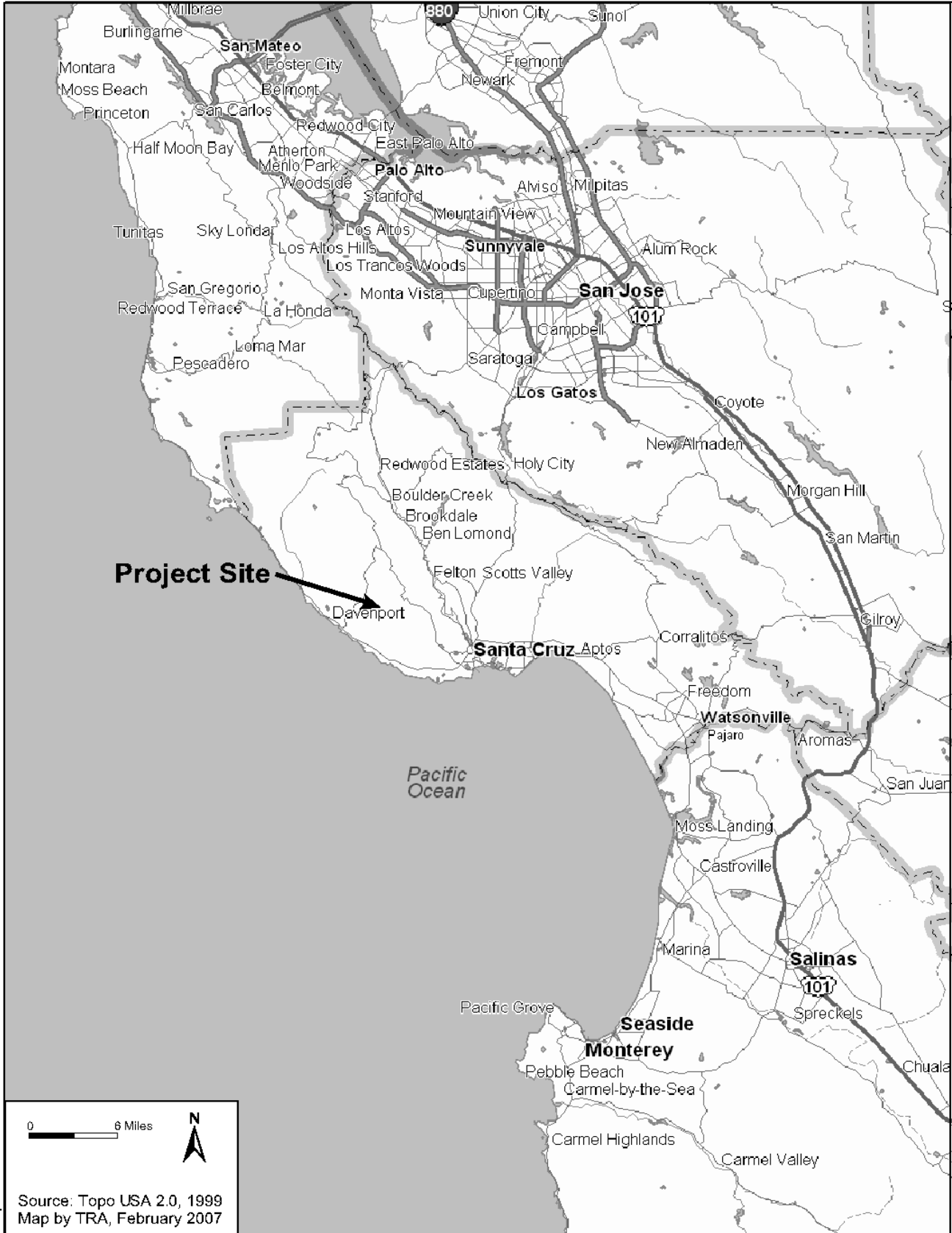
In addition to this section describing the purpose and format of the Final EIR, this document includes the following:

**Section 2.0. Comments on the Draft EIR and Responses.** Section 2 contains copies of all written comments received on the Draft EIR, as well as the responses to comments. Each comment letter is numbered with a Roman numeral and letter (e.g., I-A) in the top margin, with individual comments numbered in the right margin.

**Section 3.0. Errata to the Draft EIR.** Section 3 contains errata presenting text from the Draft EIR that has been amended as a result of comments received during the Draft EIR public review process. Changes to the Draft EIR are shown with page revisions in the order they appear in the Draft EIR. Text in standard print is original text from the Draft EIR. Underlined text indicates additions to the original text, and strikeout text indicates deletions to the original text.

**Section 4.0. Summary of the Draft EIR.** Section 4 includes the Summary from the Draft EIR with the revisions made as a result of comments received on the Draft EIR.

Figure 1. Regional Location

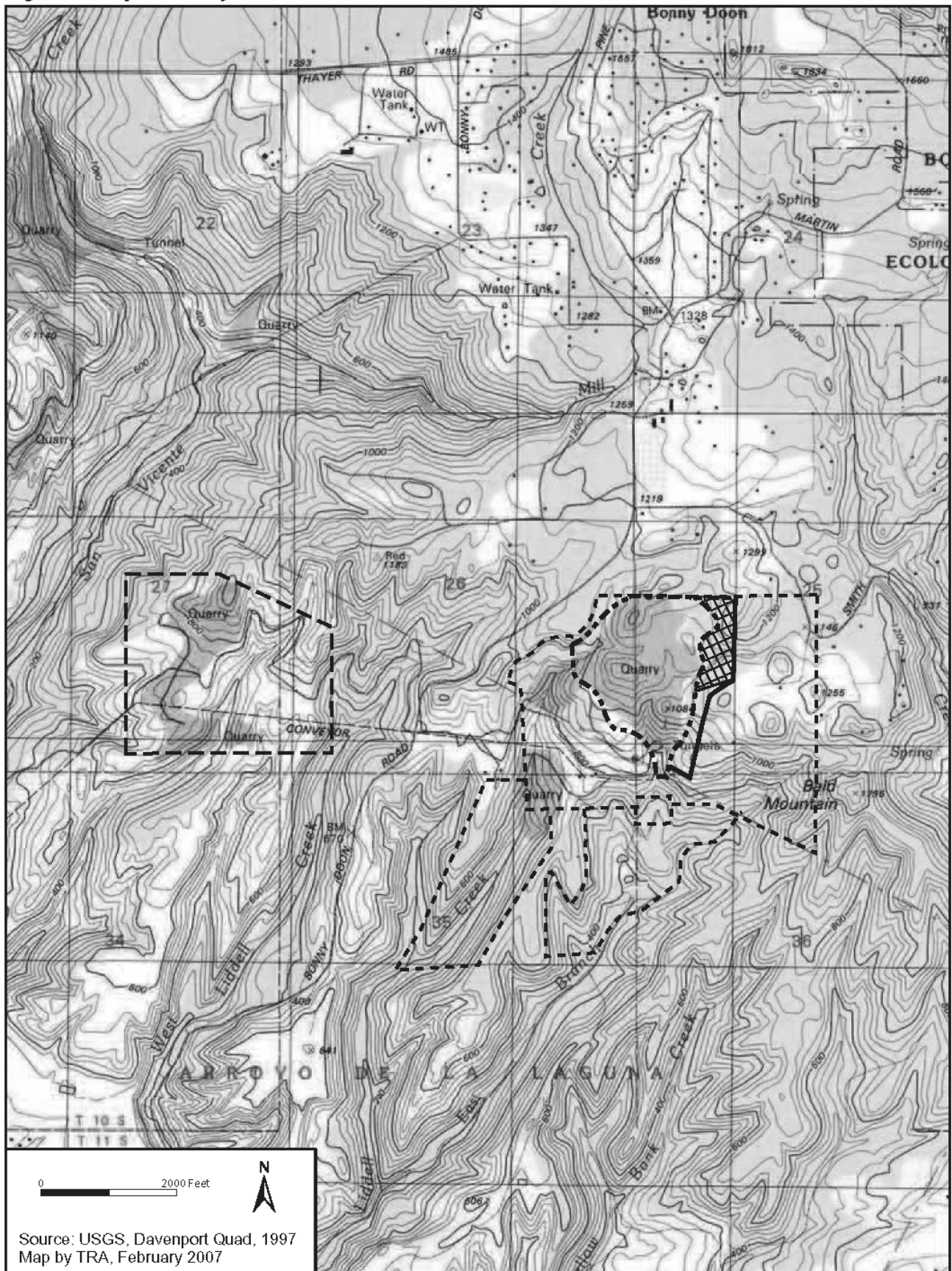


ercplac.cdr

Source: Topo USA 2.0, 1999  
Map by TRA, February 2007

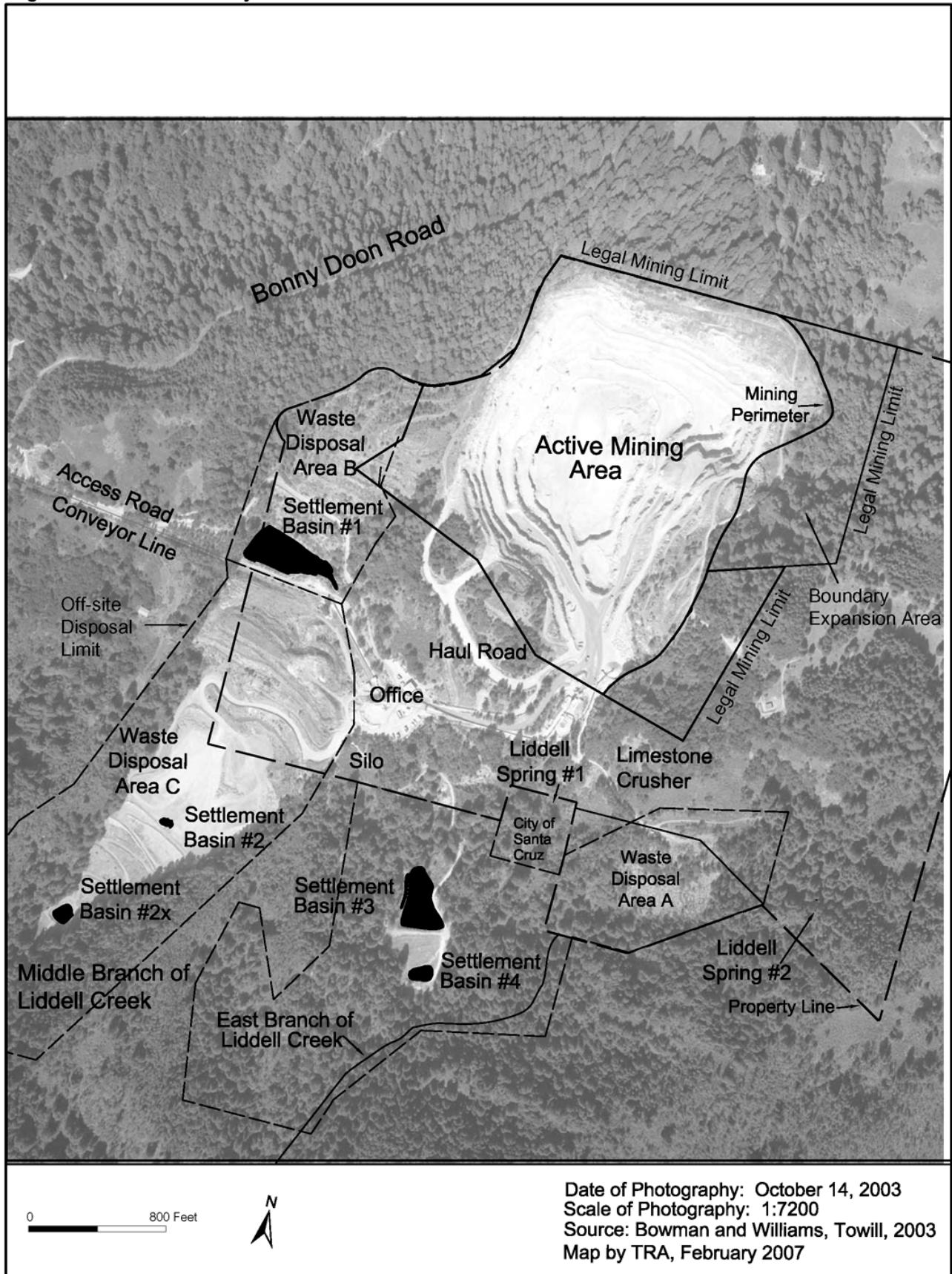
*This page intentionally left blank.*

Figure 2. Project Vicinity



*This page intentionally left blank.*

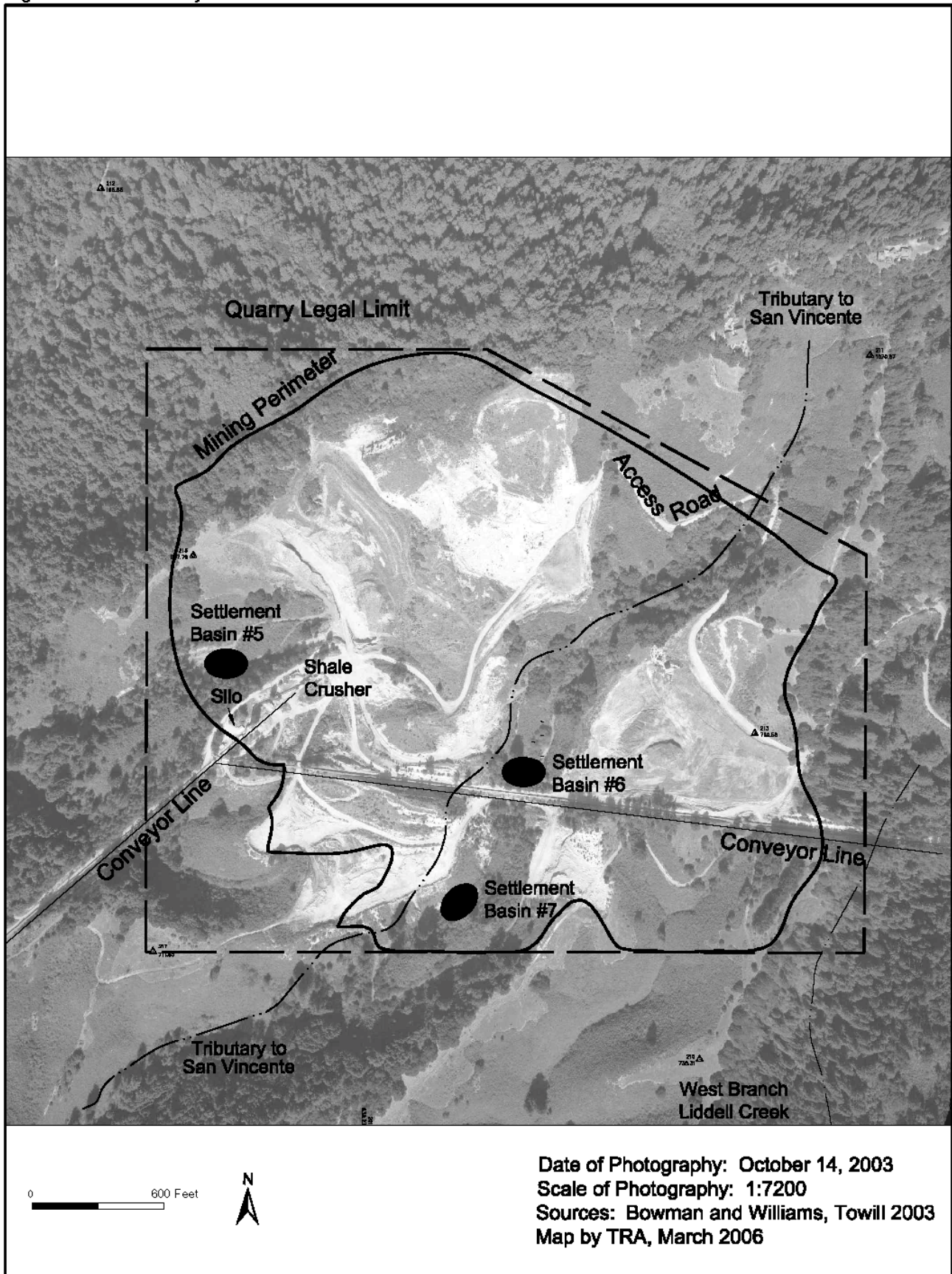
Figure 3. Limestone Quarry Facilities



*This page intentionally left blank.*

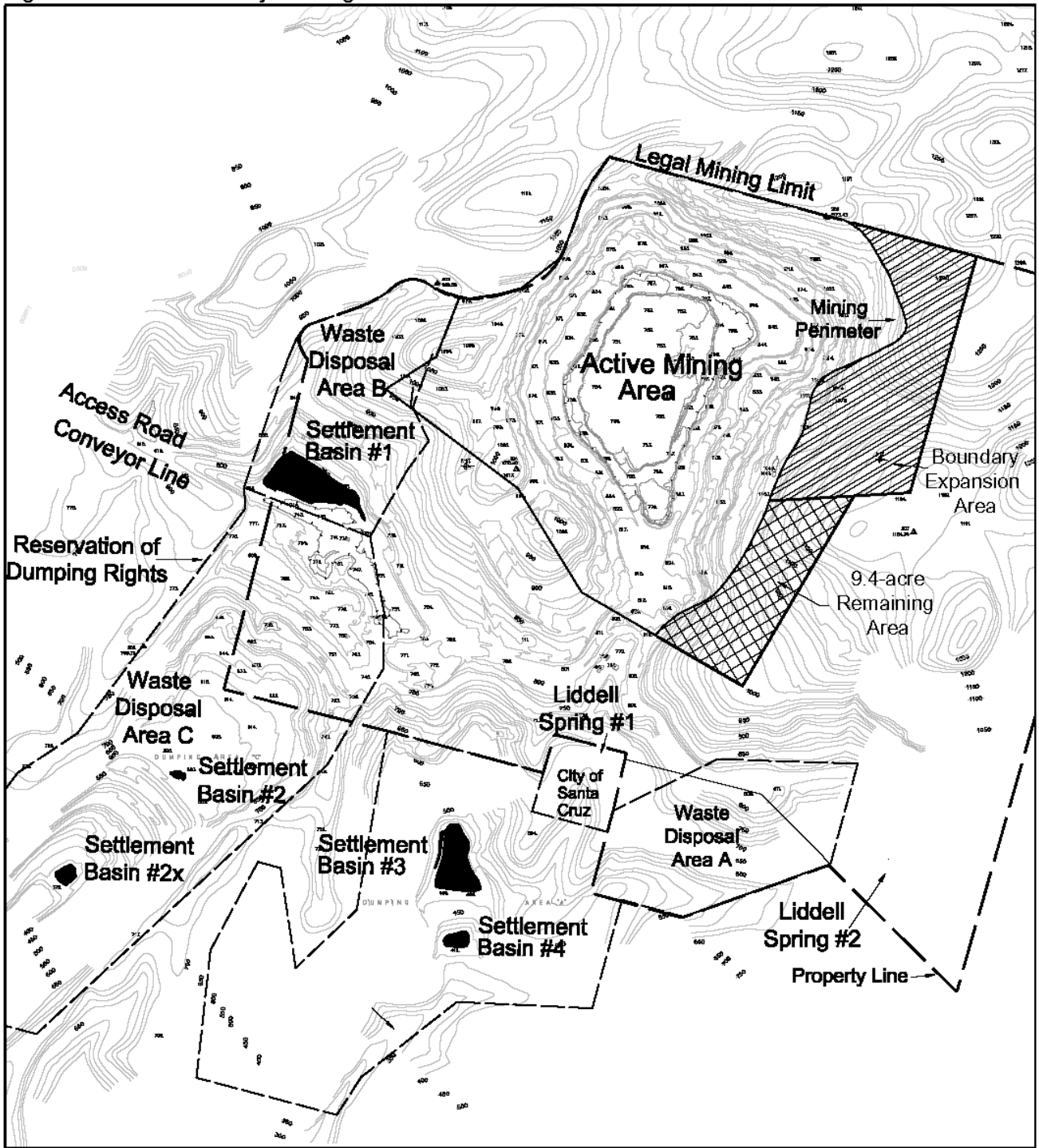


Figure 4. Shale Quarry Facilities



*This page intentionally left blank.*

Figure 5. Limestone Quarry Existing Contours



Source: Bowman and Williams, Towill, 2003  
Map by TRA, July 2007

*This page intentionally left blank.*